

UNIVERSITY OF THE PHILIPPINES LOS BAÑOS
Office of the Vice-Chancellor for Planning and Development
UNIVERSITY PLANNING AND MAINTENANCE OFFICE
Planning and Design Section

PROJECT TITLE:

**PROPOSED
JAPANESE GATE WAY "TORII"**

LOCATION: JOSE B. ALVARO AVE. UPLB COLLEGE LAGUNA

REQUESTING PARTY:

PREPARED BY:

William Jeffrey Y. Ranola
WILLIAM JEFFREY Y. RANOLA
ARCHITECT III

RECOMMENDING APPROVAL:

Marloe B. Sundo
MARLOE B. SUNDO
DIRECTOR

Marish S. Madlangayann
MARISH S. MADLANGAYANN
VICE CHANCELLOR

APPROVED:

Fernando C. Sanchez Jr.
FERNANDO C. SANCHEZ JR.
CHANCELLOR

DESIGNED BY:	MSC	SHEET NO.	A
DATE:	07-29-20	OF	3
SP	DWD	CS	

REVISION:	DATE	DESCRIPTION	BY
	09-15-20	DRAWING FIRST ISSUE	0



11A PERSPECTIVE
1 OF 8 NOT TO SCALE

PROJECT TITLE:

**PROPOSED
 JAPANESE GATEWAY "TORII"**

LOCATION: JOSE B. ALDAME UPLB COLLEGE LAGUNA

REQUESTING PARTY:

PREPARED BY:

WILLIAM JEFFREY RANOLA
 ARCHITECT II

RECOMMENDING APPROVAL:

MARLOE B. SINDO
 DIRECTOR

MARISH S. MADLANGBAYAN
 VICE CHANCELLOR

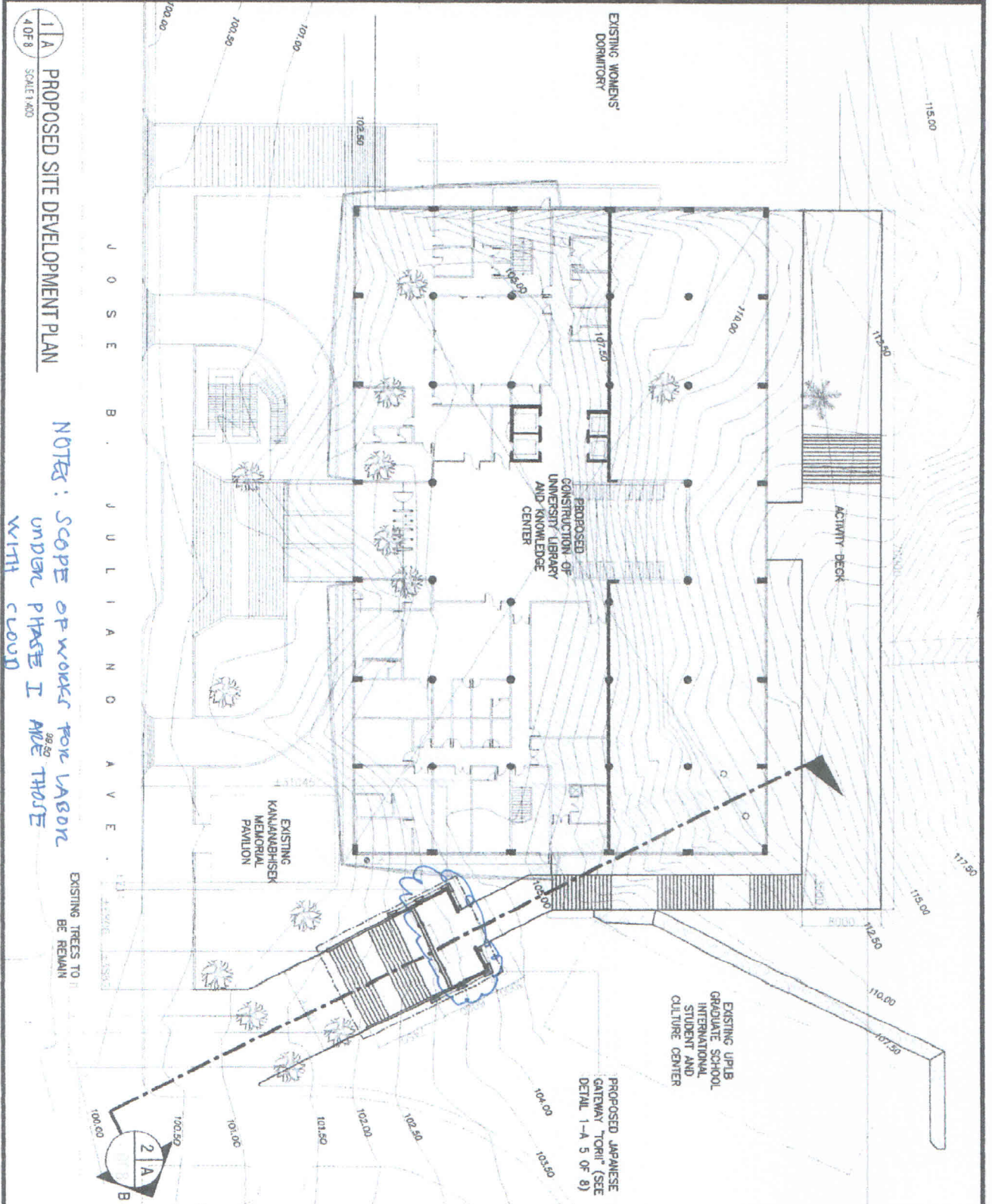
APPROVED:

FERNANDO C. SANCHEZ JR.
 CHANCELLOR

CODE NO.	MSC	SHEET NO.	A
DATE	07-29-20	DATE	07-29-20
DATE	07-29-20	DATE	07-29-20

SP	DWD	OB
----	-----	----

REVISION:	DATE	DESCRIPTION	BY
09-15-20		DRAWING FIRST ISSUE	0



NOTES: SCOPE OF WORKS FOR LABOR UNDER PHASE I AND THOSE WITH CLOUD

11A PROPOSED SITE DEVELOPMENT PLAN
 4 OF 4 SCALE 1:400



UNIVERSITY OF THE PHILIPPINES LOS BAÑOS
Office of the Vice-Chancellor for Planning and Development
UNIVERSITY PLANNING AND MAINTENANCE OFFICE
Planning and Design Section

PROJECT TITLE:

**PROPOSED
JAPANESE GATEWAY "TORII"**

LOCATION: JOSE B. ALONSO AVE. UP D College LABRINA

REQUESTING PARTY:

PREPARED BY:

WILLIAM JEFFREY Y. RANOLA
ARCHITECT II

RECOMMENDING APPROVAL:

MARLOE B. SINDO
DIRECTOR

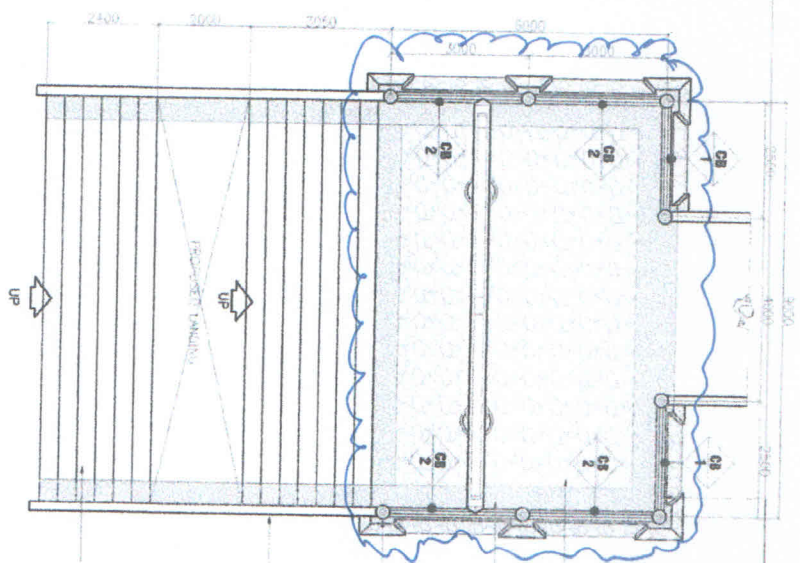
APPROVED:

FERNANDO C. SANCHEZ JR.
CHANCELLOR

MARIEH S. MADIANGBAYAN
VICE-CHANCELLOR

DESIGNED BY:	MSC	SHEET NO.	A
DATE:	07-29-20	DATE ISSUED	07-29-20
SP	DWD	CB	

REVISION:	DATE	DESCRIPTION	NO.
03-15-20		DRAWING FIRST ISSUE	0



CONCRETE BALUSTRADE WITH PLAIN CEMENT PLASTER FINISH, PAINTED WITH GLOSS LATEX BASED DIRT RESISTING PAINT FINISH (RED COLOR) TYPICAL AS SHOWN

WOOD SLATE STONE FINISH IN COLOUPEN PATTERNS (TYPICAL AS SHOWN)

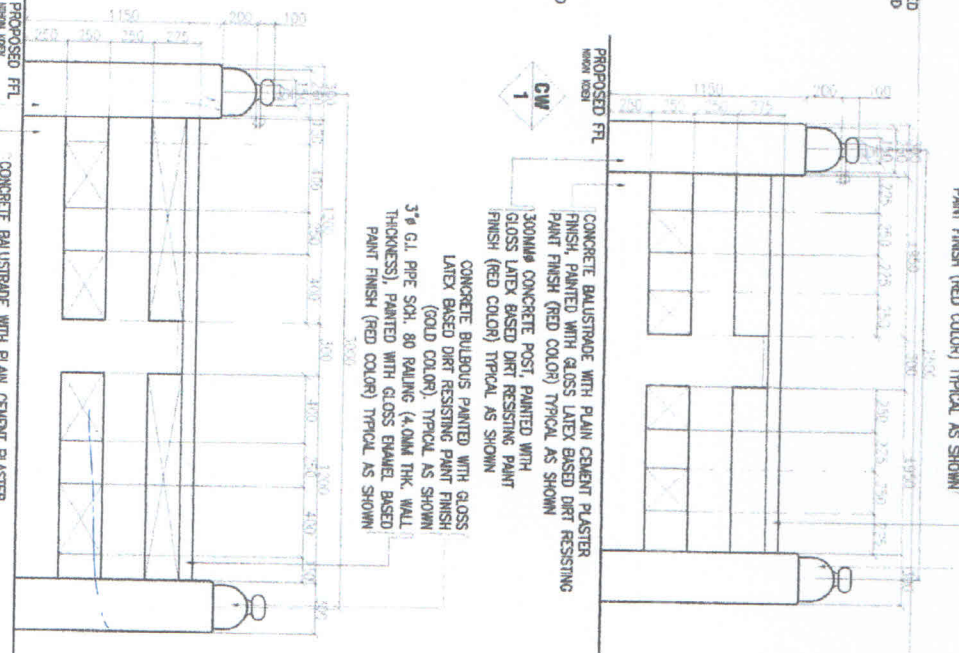
CRUSHED GRAVEL WASHOUT FINISH, GREEN SLATE STONE (TYPICAL AS SHOWN)

300MM CONCRETE POST, PAINTED WITH GLOSS LATEX BASED DIRT RESISTING PAINT FINISH (RED COLOR) TYPICAL AS SHOWN

CONCRETE RETAINER PLAIN CEMENT PLASTER FINISH WITH SEMI-GLOSS LATEX PAINT FINISH

STEPS AND LANDING WITH WOOD (TRAVEL CEMENT FINISH) (SEE STRUCTURAL PLAN DETAIL)

1/A
5 OF 8
PROPOSED FLOOR PLAN
SCALE: 1:100



CONCRETE BALUSTRADE WITH GLOSS LATEX BASED DIRT RESISTING PAINT FINISH (GOLD COLOR) TYPICAL AS SHOWN

3" Ø G.I. PIPE SCH. 80 RAILING (4.0MM THK. WALL THICKNESS), PAINTED WITH GLOSS ENAMEL BASED PAINT FINISH (RED COLOR) TYPICAL AS SHOWN

CONCRETE BALUSTRADE WITH GLOSS LATEX BASED DIRT RESISTING PAINT FINISH (GOLD COLOR) TYPICAL AS SHOWN

300MM CONCRETE POST, PAINTED WITH GLOSS LATEX BASED DIRT RESISTING PAINT FINISH (RED COLOR) TYPICAL AS SHOWN

CONCRETE BALUSTRADE WITH PLAIN CEMENT PLASTER FINISH, PAINTED WITH GLOSS LATEX BASED DIRT RESISTING PAINT FINISH (RED COLOR) TYPICAL AS SHOWN

300MM CONCRETE POST, PAINTED WITH GLOSS LATEX BASED DIRT RESISTING PAINT FINISH (RED COLOR) TYPICAL AS SHOWN

1/A
5 OF 8
DETAIL OF BALUSTRADES
SCALE: 1:30